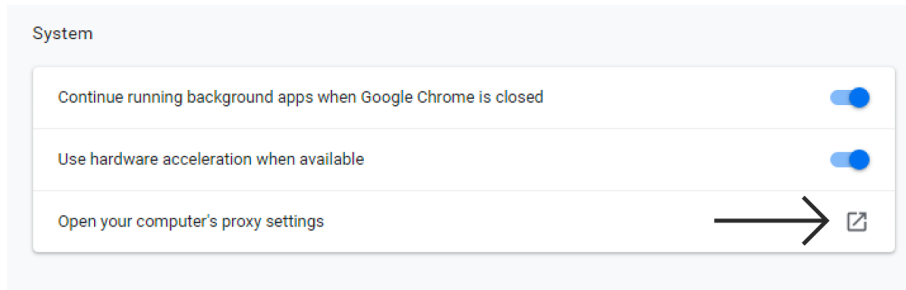
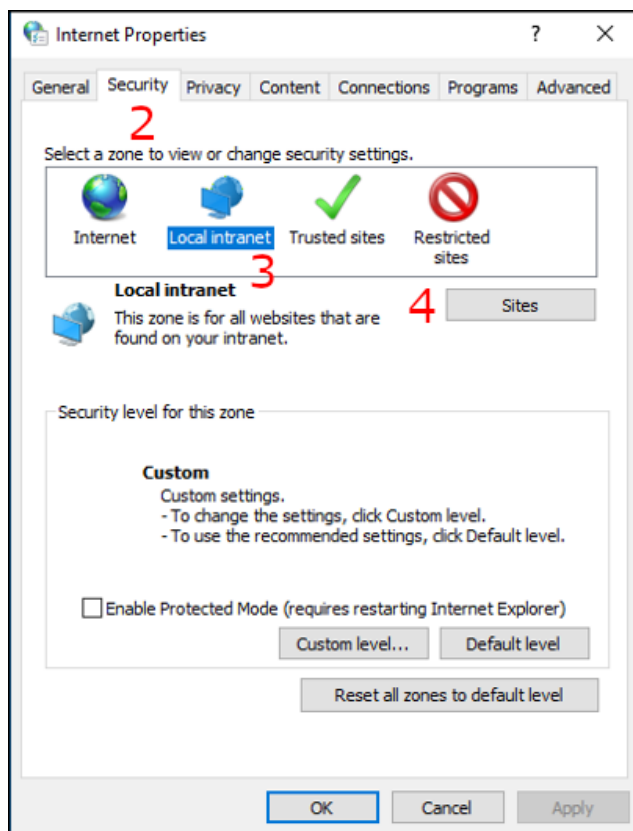


CHROME CONFIGURATION:

Open your Chrome browser at url : <chrome://settings/privacy>. Select Advanced dropdown button and click on "Open your computer's proxy settings"

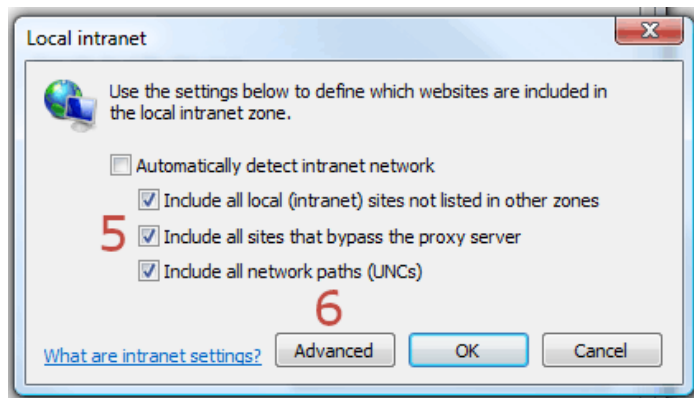


1. Go to the "Security" tab;
2. Select "Local Intranet" zone;
3. Click on the "Sites" button;

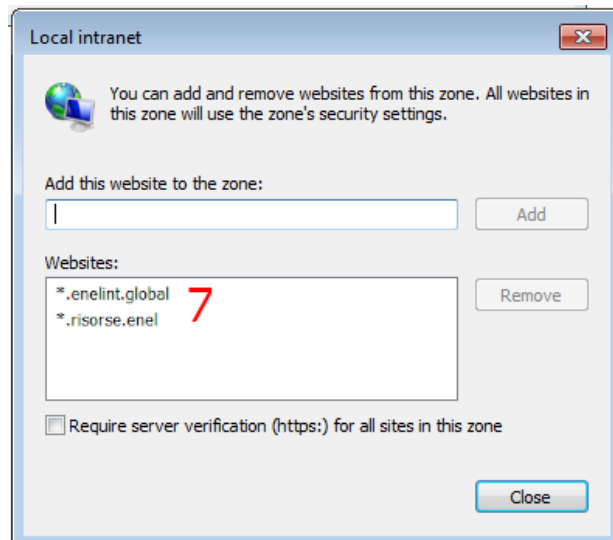


4. In the new opened window select all three checkbox;

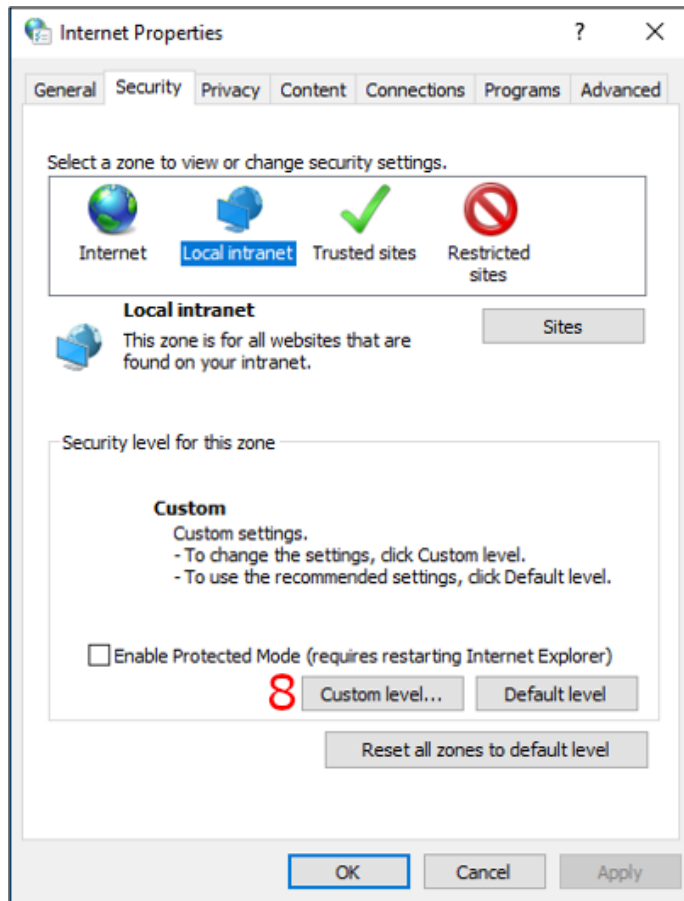
5. Then click on "Advanced" button;



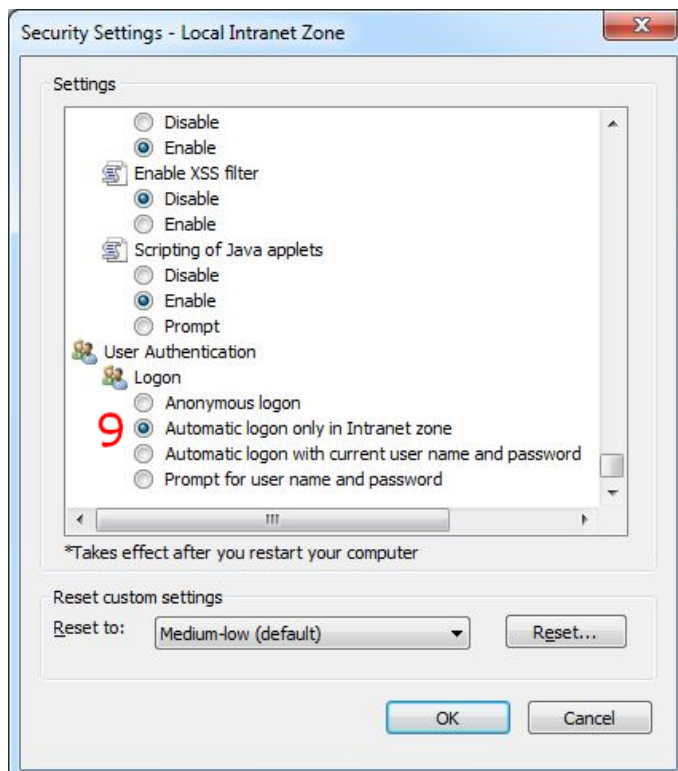
6. Now, as shown in the image, add these 2 new websites: ***.enelint.global**, ***.risorse.enel**. Then close this and the previous window;



7. You are now in the Internet properties as in the step 2. Click on "Custom level" button.



8. Now search "User authentication" property and, as shown in the figure, select "Automatic logon only in the Intranet zone";



9. Now confirm and press the "OK" button.
10. (Optional) In some cases it's necessary restart your computer.